

Sample: 0083.10500

Strain: Kings Premium Hemp Blend

Sample Received: 12/16/2020; Report Created: 12/18/2020

No Address Provided
Santa Fe, NM 87107
Client Sample ID: Kings Premium Hemp Blend
Kings Premium Hemp Blend

Plant, Hemp



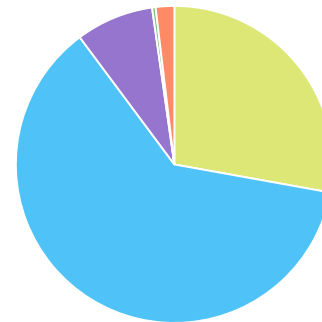
Cannabinoids



Cannabinoid	Mass	Mass
	%	mg/g
THCa	0.04	0.4
Δ9-THC	0.21	2.1
Δ8-THC	NR	NR
THCVa	NR	NR
THCV	NR	NR
CBDa	6.88	68.8
CBD	3.09	30.9
CBDVa	NR	NR
CBDV	NR	NR
CBN	<0.01	<0.1
CBGa	0.88	8.8
CBG	NR	NR
CBCa	NR	NR
CBC	NR	NR
CBLa	NR	NR
Total	11.10	111.0

Fraction of Measured Cannabinoids

■ CBD
 ■ CBDa
 ■ CBGa
 ■ THCa
 ■ Δ9-THC



Total THC = THCa * 0.877 + d9-THC

Total CBD = CBDa * 0.877 + CBD

LOQ = Limit of Quantitation; NR = Not Reported because Not Tested; Tested in accordance with Scepter SOP #11. v.2.1 utilizing HPLC

Microbials

Analyte	DOH Limit	Result
	CFU/g	CFU/g
Aerobic Bacteria	100000	3,000
Bile-Tolerant Gram-Negative Bacteria	1000	300 CFU/g
E. Coli	0	Absence
Salmonella	0	Absence
Yeast & Mold	1000	<100

CFU/g = Colony forming units per gram

>Limit = Colony forming units per gram exceeds limits established by NMDOH

Tested in accordance with Scepter SOP #7.0 v.2.1

Mycotoxins

Analyte	DOH Limit	Mass
	PPB	PPB
Aflatoxins		<4.00
Ochratoxin A		8.70
Total Mycotoxins	20.00	<20.00

Limit of Quantitation; for Aflatoxins = 4.0ppb

Limit of Quantitation; for Ochratoxins = 2.0ppb

Tested in accordance with Scepter SOP #12 v.1.6

No Address Provided
Santa Fe, NM 87107
Client Sample ID: Kings Premium Hemp Blend
Kings Premium Hemp Blend
Plant, Hemp

Sample: 0083.10500

Strain: Kings Premium Hemp Blend

Sample Received: 12/16/2020; Report Created: 12/18/2020

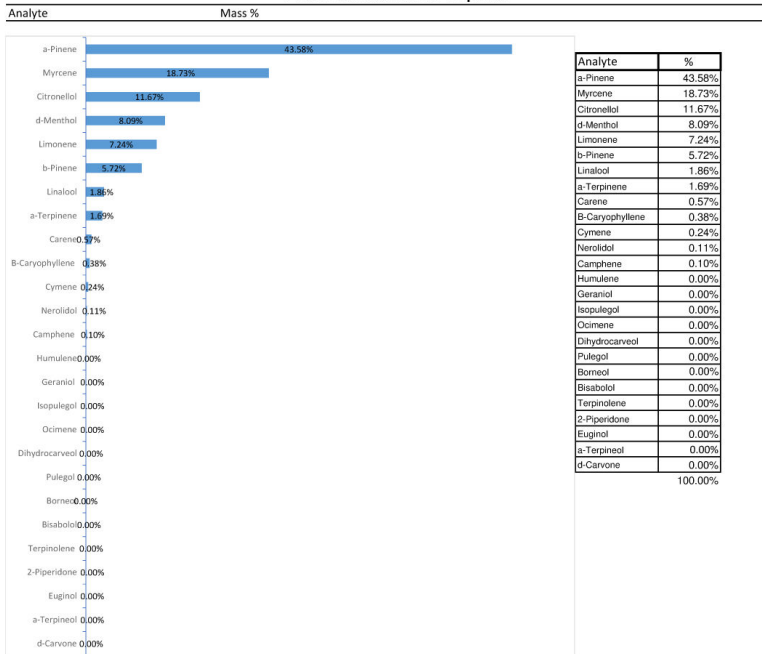


Laboratory Analysis

PTX
Kings Premium Hemp Blend

Sample ID: 0083.10500
Received: 12/16/20
Reported: 12/18/20

Percents of Measured Terpenes



2778 Agua Fria Bldg C Suite B
Santa Fe, NM
(505) 216-9484
http://scepterlabs.com
Lic# 1102

Kathleen O'Dea
Kathleen O'Dea
Director

This product has been tested by Scepter Lab using validated testing methodologies. Values reported relate only to the sample tested. Scepter Lab makes no claims as to the efficacy, safety or other risks associated with any detected or non-detected levels of any compounds reported herein. This Certificate shall not be reproduced except in full, without the written approval of Scepter Lab.

